



Diocese of La Crosse

4238 MORMON COULEE ROAD
LA CROSSE, WISCONSIN 54601

OFFICE OF THE BISHOP



November 6, 1977

To the Faithful of St. Olaf Parish in Eau Claire:
My dear friends in Christ,

It is a real joy and pleasure for me to extend to you my sincere congratulations upon the 25th anniversary of the establishment of your parish. May I join with you in expressing gratitude to God for the many graces and blessings which He has bestowed upon your people during those twenty-five years.

It is fitting and proper to celebrate this anniversary to recall and express appreciation for the sacrifices of many priests, religious, laymen and laywomen who have served your parish during the past twenty-five years. The beginnings of a new parish are generally difficult and require much sacrifice. The fact that your parish now flourishes with a strong faith and a truly pastoral care for your people through the Team Ministry which you have established is certainly evidence that these sacrifices were blessed by God and made fruitful.

An anniversary is also a time to look ahead. I join you in the prayer that God will continue to bless the priests, religious and laity of your parish with a deepened spirit of faith and a renewed spirit of generous sacrifice so that you can continue to maintain a ministry of service to your people.

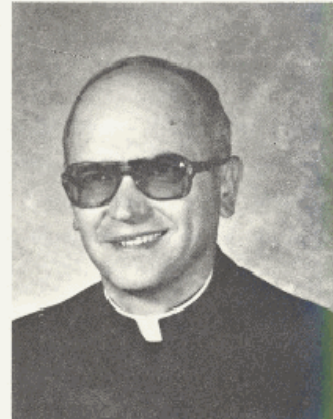
May I especially urge your continued commitment to Catholic education for your young people so that the heritage of faith will remain strong for many generations to come.

With sentiments of esteem and gratitude and begging God's blessings upon all of you, I remain

Sincerely yours in Christ,

+ D. M. Drisking
Bishop of La Crosse

ST. OLAF'S PARISH
2408 North Lane
Eau Claire, Wisconsin 54701



May, 1977

Dear Friends:

It is a privilege and a joy to be a part of St. Olaf's Faith Community as we celebrate twenty five years as a parish. It is a celebration of the aches and pains, and the joys and struggles of wonderful people who make up the pulse of this believing community. It is the celebration of a spirit that says, "I believe in the sun even when it isn't shining." It is the celebration of a people who are concerned about people, about children and about tomorrow. It is the celebration of the ongoing work of the Spirit in our lives.

I would like to commend all of our chartered members as well as the many parishioners over the years who have helped and struggled to make St. Olaf's what it is today. It was your hard work, your vision and your continued sacrifice and dedication which brought St. Olaf's from an empty lot to a place of worship and religious education. We have reason to be proud. We have reason to rejoice at our accomplishments.

Perhaps as we pause to appreciate our past we should also look to our future; to the next 25 or 50 years. They too will present a challenge; a challenge perhaps far more difficult than the past 25 years. To meet this challenge we need to keep our vision. We need to continue the work of the Spirit. We need to support each other in our Faith Life. We have the building, but that is not the hardest part of a parish to build or maintain. The real challenge is to deepen our Faith Life; to be a witness of Christ's love to our children and to the whole area of Eau Claire. Today if we are celebrating the building of an institution we have failed. But if we can honestly celebrate the deep faith of a people we have reason to rejoice.

So, as we give thanks to God for our past let us also look to our future. Let us walk together always open to the Spirit. Let us continue to grow in the Wisdom of God. Let us be ready to support and encourage one another during moments of trial and hardship. Let us make our parish not only a well maintained building but a place that generates a deep faith and love to all whom we are privileged to touch by our lives.

Sincerely,

A handwritten signature in dark ink, appearing to read "W. J. Matzek".

Fr. Wm. J. Matzek
Pastor

St. Olaf's Parish

The First 25 Years

The story of St. Olaf's parish didn't begin on July 2, 1952, when the Most Reverend John P. Treacy announced the formation of a new parish in Eau Claire, Wisconsin. It began rather in Norway with the birth of Olaf Haraldson in the year 995.



ST. OLAF,
PATRON SAINT OF THE PARISH

Haraldson knew he was the son of King Harold of Norway and that he, too, would one day take over its leadership. He didn't, however, realize as he traveled through England as a young Viking that his life was to have a cause much greater than being a King. He was to become a Saint and a patron saint to a Catholic parish in a land yet to be discovered, America.

Olaf went to England as a young lad and it was there that he acquired a great love for the Catholic faith and decided that his future subjects in Norway would be better off spiritually and temporally, as Christians and Catholics.

When he returned to Norway at about the age of 20, Olaf found that his father had been deposed by a certain Earl Sweyn. The throne was not going to be his without a battle even though local leaders recognized his leadership qualities and elected him King in 1015. Olaf still had to defeat Sweyn and in 1016 he accomplished this.

Olaf's crusade for Catholicism had only just begun. He had to do away with the petty kings of the South, crush the aristocracy and enforce the acceptance of Christianity throughout his Kingdom. He also led a successful raid on Denmark, asserted his power in the Orkney Islands and humbled the King of Sweden.

Olaf's hard work paid off and in a few years he had won more power than any of his predecessors.

Killed in battle in 1030, Olaf still held a power over his people. Many miracles were said to be connected with his death and within a year of his death belief in his sanctity had already spread. He was canonized in 1164.



BISHOP JOHN P. TREACY

When Bishop Treacy named the new parish St. Olaf's, he did so because there were so many Scandinavians within the new parish's boundaries. Realizing it or not, Bishop Treacy also gave the parish a benefactor rich in the pioneering spirit. One, who had done much to propagate the faith.

It was with this pioneering spirit that Father Robert Agnew arrived in Eau Claire on July 9, 1952 one week after Bishop Treacy announced the formation of the new parish.

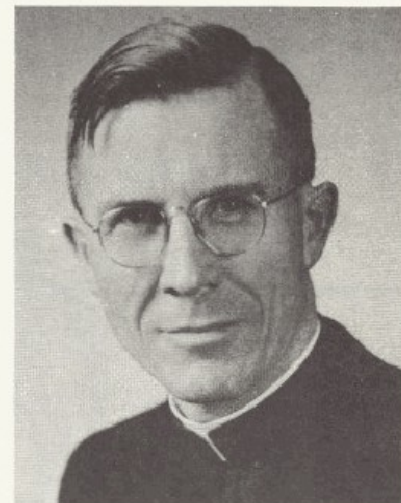
The announcement of a new parish for north Eau Claire came as a surprise to many of its proposed new members. Was there a need for another catholic parish in Eau Claire? Could so few members support a church? Why call it St. Olaf's? These were the questions that Catholics and non-Catholics alike were asking in July 1952. It was even the topic of a Sunday sermon on a local radio station.

Father Agnew had been pastor at St. Paul's parish in New Lisbon prior to his appointment at St. Olaf's and St. Paul's loss was St. Olaf's gain. Fr. Agnew began immediately to take a census of his new parish, as outlined by the Bishop's decree.

Land boundaries for the new parish were to be County Trunk O on the north, County Trunk P on the east to the Eau Claire River, south to the Eau Claire River and County Trunk Highway Q, (also known as Seymour Road) to the Chippewa River and then north to the intersection of County Trunk Highway O and the Chippewa River.

The new boundaries of the church included members of Sacred Heart and St. Patrick's, Eau Claire; St. Mary's, Altoona; and Holy Ghost, Chippewa Falls.

Doors were not always open to Father Agnew, a native of nearby Cadott, but when he had completed the task of visiting each household in his new parish, he found that he had one hundred twenty five adult members.



FATHER ROBERT E. AGNEW



Father Robert Agnew and his mother, Sadie, settle down to life at St. Olaf's. Mrs. Agnew has the distinction of being the parish's first housekeeper.



Since there were no physical properties of the new parish, no church, school or rectory, Fr. Agnew resided at the Immaculate Conception rectory with other priests and his mother.

Having a roof over his own head, Fr. Agnew started looking for a building big enough to hold Mass. The only available building large enough to accommodate the new congregation was the VFW Club at 1300 Riverview Drive. It was an unlikely place to hold Mass, but the building was 33 by 52 feet and had space enough for 200 people.



SUNDAY CHURCH GOERS LEAVE THE VFW AFTER MASS

The new parish congregated and celebrated its first Mass on August 17, 1952. There were no side aisles and church goers could not kneel. A folding table served as an altar.

Pioneer parishioners remember hearing empty bottles from the night before being broken outside during services.

The first Mass having been said was like a signal for the new parish to say "we are." And with that the parishioners set out to worship and build together.



OFFICERS OF THE FIRST ALTAR SOCIETY WERE SEATED FROM LEFT MRS. VICTOR FIGLMILLER, SR., PRESIDENT; AND MRS. JOHN GRILL, VICE PRESIDENT. STANDING WERE MRS. CLYDE OMODTH, SUNSHINE LADY; PAT GILFOY, TREASURER; AND MRS. JOHN HOEPNER, SECRETARY.

The Altar Society was formed on Aug. 22, 1952. Mrs. Victor Figlmiller Sr., was its first president and she was assisted by Mrs. John Grill, Mrs. John Hoepner, Mrs. Clyde Omodth, and Miss Pat Gilfoy. The group met at the Sacred Heart Hall.

The ladies of the Altar Society began their work at once and a bake sale was its first big event. The sale held in Samuelson's basement, Aug. 29 was termed a "Big Success!"

The first physical acquirement of the parish was a rectory purchased on Sept. 12, 1952 at 2913 N. Hastings Way. Father Agnew and his mother moved in on Oct. 3. Weekday masses were celebrated here and it also served as a place for organizational meetings and confessions. Miss Mary Curran, St. Patrick's parish, donated many of the furnishings for the new rectory.



THE FIRST RECTORY OF THE PARISH WAS LOCATED AT 2913 N. HASTINGS WAY, WHICH IS NOW WESTERN AVENUE

The first Sunday in October that year saw the parish's first baptism, Patrick Karker, Patricia Fleury and Patricia Steinberg were also baptised on that day. The church's first big affair was held on that Sunday also, a turkey dinner at Sacred Heart Hall. Over 1,000 meals were served.



PATRICIA FLEURY AND PATRICK KARKER, TWO OF THE FIRST THREE CHILDREN BAPTIZED AT ST. OLAF'S, PRESENTED FR. AGNEW WITH THE KEYS AND REGISTRATION TO A NEW CAR IN BEHALF OF THE PARISH WHEN FR. LEFT IN 1964.

The first funeral was held on Oct. 30, for Richard Larson, who had died on October 27. Within four months the new parish had welcomed new members and said good-bye to another.

The Altar Society kept busy sponsoring a "Miles for Pennies" drive in November. The group made \$600. In December they held a kitchen shower for the rectory.

TURKEY DINNER

The newly organized

St. Olaf's Parish, Eau Claire, Wis.

Father Robert Agnew, Pastor, invites you to attend its

FIRST CHURCH DINNER — PICNIC AND BAZAAR

At the Sacred Heart Parish Hall in Eau Claire

Sunday, October 5

Serving 11:15-2:00, 4:00-6:00

Adults \$1.25 High School Students 75c Grade School 50c Pre-School, free!

Games and Amusements — Help the New Parish Get Started!

Midnight Mass in December 1952 was the first High Mass said in the parish. High School students sang and Mrs. Agnew accompanied them on an organ borrowed from St. Benedicts School, Altoona.

It seems rather ironic with what the group had already accomplished that they did not hold a Get Acquainted party for the parishioners until Feb. 8, 1953 at Sacred Heart Hall.

The parish grew and soon three Masses were required each Sunday. Fr. Jerome Palmer, O.S.B., chaplain of St. Bede's Priory was called upon to be the unofficial assistant on Sundays and Holy Days. He said his first Mass at St. Olaf's on April 19, 1953.

The Benedictine sisters of St. Bede's played a part in the early development of the church. The nuns taught summer and vacation schools in living rooms, basements, and garages.

The spirit of St. Olaf prevailed in the church and when it became time to build the first permanent building, it was decided to build the school. A school to teach the children their faith.

A building committee of John Grill, Louis Statz, Andrew Carlson, Rudolph Epp and John Hoepner was appointed. The group engaged Eugene Phillips, Milwaukee, on May 24, 1953 to draw up plans for the school.



MEMBERS OF THE BUILDING COMMITTEE, WHO ASSISTED IN PLANS FOR THE NEW SCHOOL WERE SEATED FROM LEFT: JOHN GRILL AND LOUIS STATZ, STANDING FROM LEFT WERE: ANDREW CARLSON, RUDOLPH EPP, AND JOHN HOEPNER.



June of 1953 saw a number of firsts for the parish. It was on the 16th that Wilmer Dekan and Frances Schottl were married in the church's first wedding. The first parish picnic was held at St. Bridget's Hall, Springfield, June 21 and on June 28, the parish held its first First Communion. The class consisted of 18 public school students because 100 of St. Olaf's children attended Sacred Heart School, 20 of St. Patrick's and five of Holy Ghost's.

The first adult instruction class got under way on July 13, 1953. Four members of the class were later to enter the church.

The men of the parish, not to be outdone by the ladies, sponsored a dinner and supper at Sacred Heart Hall on Sept. 27.

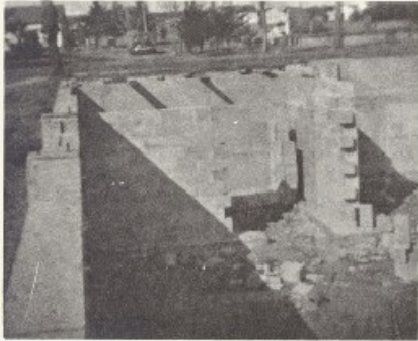
A permanent rectory for the parish was purchased on Oct. 16 at 2408 N. Lane. The building was across the street from the site planned for the future parish buildings, approximately 3 acres at the corner of N. Lane and Monroe St. Because of extensive remodeling that had to be done the new rectory was not to be occupied until January of 1955.

Bids were opened for the new school on Dec. 14, 1953, and the contracts were signed soon after that. Walker Construction Company was chosen general contractor with a bid of \$137,703. Grudem Brothers, St. Paul were selected for the plumbing, heating and ventilating work with a bid of \$35,176. C. R. Stocks Electrical Company did the electrical work for \$10,880.

Ground breaking ceremonies for the new school were held on Jan. 10, 1954. Participating in the ceremonies were Rev. Fr. William Daniels, St. Charles, Chippewa Falls; Fr. Robert Agnew; Rt. Rev. Msgr. John W. Pittz, Sacred Heart, Eau Claire; Fr. A. J. Favre, C. S. Sp, Holy Ghost, Chippewa Falls; and James Fering, Richard Hoepner, and William Michels, servers. Excavation began the next day.



REV. FR. WILLIAM DANIELS, ST. CHARLES, CHIPPEWA FALLS, TURNS THE FIRST SHOVELFUL OF DIRT FOR THE NEW SCHOOL.



IN THE BEGINNING

"Our Lady of Fatima" Praesidium of the Legion of Mary was organized in May of 1954.

The school was finished and dedicated by Bishop Treacy in September of 1954. The \$185,000 brick and waylite block, two story structure was 60 by 120 feet. The partitions were left out of the upper story to provide space for a temporary chapel and living quarters for the teaching sisters.

Fr. Agnew was now able to celebrate daily Mass and Sunday Mass on the second floor of the school.

The Sorrowful Mother nuns, whose Mother House was in Milwaukee, would eventually staff the school. Due to a lack of sisters to teach, no classrooms were opened in 1954.

Involvement of youth in their parish has always been a foremost goal at St. Olaf's and in this vein Walter Allard started the first Boy Scout troupe in November 1954. Allard was scoutmaster to 15 boys in the Parish's troupe 107.

St. Olaf's school opened its doors to 168 students in September of 1955. Due to a limited teaching staff only four classrooms were open serving grades one through seven. Three nuns and one lay teacher made up the staff.

Two months later on Nov. 2, 1955 St. Olaf's School held its first PTA meeting with Donald McCrackin serving as its first president.

That same month Cub Scout Pack 107 was started with 32 boys. Chester Smuhl was pack master.

THE SCHOOL BUILDING WAS COMPLETED IN SEPT. 1954



Land, a rectory and a school had been accumulated by the parish and also a debt on which more than \$8,000 a year interest was being paid. Members of the parish decided to conduct a fund drive in 1956 to retire the parish debt. Fr. Agnew in a letter to parishioners stated that before any more construction could be undertaken the debts already incurred must be liquidated. He added that having come to know you as well as I have, I am convinced that this can be done with faith, prayer and sacrifice.

It was felt that increased giving would develop greatly increased interest in the church and in parishioners own spiritual lives. Every family was to look upon the canvass as the opportunity to make the greatest sacrifice of their lifetime for their faith.

The canvass was an organized, intensive, face-to-face solicitation in the homes for the building fund and budget pledges to be paid over a 150 week period with pledge payments beginning Feb. 26, 1956.

Men and women of the parish made not only a monetary sacrifice but gave of their time to make the drive a success. S. W. Rahr served as general chairman; W. F. Steinmetz, initial gifts chairman; Dennis Meyer, canvass chairman, and Lloyd Barrickman and Glen Gilbert, divisional leaders.

Captains were Roy Guite, Louis Schmidt, Arthur McMahon, A. W. Foster, James Schmit, Brendan Murphy and Imbert Eslinger. Other parishioners served as canvassers or on the hostess, arrangements or publications committees.

WELLS FUND DRIVE TEAM

GENERAL CHAIRMAN	S. W. Rahr	CANVASS CHAIRMAN	Dennis Meyer
INITIAL GIFTS CHAIRMAN	W. F. Steinmetz	DIVISIONAL LEADERS	Lloyd Barrickman, Glen Gilbert

CAPTAINS - Roy Guite, Louis Schmidt, Arthur McMahon, A. W. Foster, James Schmit, Brendan Murphy, Imbert Eslinger.

CANVASSERS

Bernard Kneer	Dennis Shaw	Marshall McFaul
Danial K. Bell	Bernard Nicolai	Richard Parrott
C. C. Bailer	Glenn Wilson	Rudolph Epp
John Grill, Jr.	George Shaw	Donald McCrackin
Jack L. Jasper	John Barnum	John Nelson
Walter Kuehn	John Kroll	Harold Kronenberg
Victor Figlmiller, Sr.	Albert Martenson	H. Harings
Clarence VanderWegen	Richard Krogman	M. Harings
John Hoepner	Bernard McSorley, Sr.	W. Mauhar
Eugene Bowe	Andrew Carlson	Chester Smuhl

PUBLICATION COMMITTEE

Chairmen: Peter Bisek, Mrs. J. Jasper, Mrs. B. Nicolai, Mrs. H. Van Helden.

The first assistant pastor to be appointed to St. Olaf's was Fr. Myron Meinen, who took over his duties on Feb. 22, 1957. Fr. Meinen organized the athletic program and the St. Vincent de Paul Society to aid the poor and needy in the area. He was spiritual director of discussion groups and led a fund raising project to purchase a new organ.



FR. ROBERT AGNEW WITH HIS FIRST PARISH ASSISTANT PRIEST FR. MYRON MEINEN.

The spring of 1957 was special in the parish because 18 students of St. Olaf's were in the first graduating class from the school. A scholarship to Regis High School was divided between Judy Nichols and Maxine Knowlton, both of whom maintained "A" averages, Merit awards went to Karen Pehoske, Catherine Fering, Patty Kampa and Marjorie Zell.



MEMBERS OF THE FIRST GRADUATING CLASS FROM ST. OLAF'S POSE FOR A PICTURE. THEY INCLUDED FROM LEFT, FIRST ROW: MARY NICOLAI, FLOWER GIRL; JUDY NICHOLS; KAREN PEHOSKE; CATHERINE FERING; RITA OLSON; PATTY KAMPA; DEBRA DRAKE, FLOWER GIRL. SECOND ROW FROM LEFT ARE DARYL KELLY; MAXINE KNOWLTON; MARJORIE ZELL; PATSY STERLING; SANDRA BARRICKMAN; CAROL HAUPTMAN; MARY JANE McINNIS; LEONARD MARTIN; SISTER MARY LONGINA. THIRD ROW FROM LEFT ARE FR. ROBERT AGNEW, PASTOR; LENA TARBOX; WILLIAM ANDERSON; ANTHONY RUSSELL; RONALD BALKE; MARY ANNE PERRY, AND FR. MYRON MEINEN, ASSISTANT PASTOR.

Seven classrooms were put in use when school opened in September of 1958. Since some of these were on the second floor it was necessary to move the church to the basement of the building. The last available classroom went into use the following year.

Fr. Robert Hegenbarth was appointed assistant pastor in Aug. 1959. He replaced Fr. Meinen. Fr. Hegenbarth organized the Christian Family Movement. He served as choir director and was responsible for the interior decorating of the church.

St. Olaf's parish was growing and with all the classrooms and the basement being utilized to the fullest Fr. Agnew told his parishioners "something has to be done, and I am sure that with God's help, the same generous spirit that you good people have shown until now will again provide the space which our growing parish so obviously needs."



FR. ROBERT HEGENBARTH

Plans for the new addition included four new classrooms, locker rooms and shower rooms for athletic activities. A combination gymnasium-auditorium to seat 500 persons was planned to serve as a temporary church. Fr. Agnew noted "With it in use, you won't have to sit in the kitchen, nor on the stairs, to assist at Sunday Mass. With it in use, the present "church" can again be used for its original purpose, a dining hall and meeting hall." He added that when the day comes that we are ready and able to build a real church, the area used for a church in the presently proposed building will be of such dimensions as to provide a fine gymnasium, more than the legal size for the ordinary Junior High.



THE ADDITION WAS COMPLETED IN 1960 AND STANDS TODAY AS IT WAS THEN

The 130 by 60 foot structure was completed in 1960, featuring a main sanctuary, a sanctuary for the priests and altar boys, a choir loft and a crying room for children.

The First service held in the new church was Midnight Mass, Dec. 25, 1960.

The Altar Society hosted a dedication dinner in April 1961 for the new addition.

St. Olaf's welcomed its third associate pastor on Sept. 27, 1961. Fr. Bernard Raschke arrived to take the place of Fr. Hegenbarth who went to St. Patrick's Parish, Sparta. Fr. Raschke, like his predecessor, was active in choir work and the Christian Family Movement.

St. Olaf's said good-bye to more than a friend in July 1964. Fr. Agnew was assigned to St. Wenceslaus parish in Milladore. A farewell reception was given in his honor. Don McCrackin, president of the Holy Name Society, was master of ceremonies at the event and paid tribute to the services and accomplishments of the parish under Fr. Agnew's guidance.

Fr. Meinen, who had been the first assistant pastor at St. Olaf's now returned to the parish as its pastor.



FR. BERNARD RASCHKE

The St. Olaf's Altar Society became the St. Olaf Parish Council of Catholic Women in November of 1964.

The Vatican Council meeting halfway around the world in Rome brought changes to St. Olaf's in the mid-1960's. The Council made the changes hoping that parishioners would take a more active part in the celebration of Mass.

The traditional Latin Mass was out and the English version in. The priest no longer celebrated Mass with his back to the congregation, but rather faced them with the altar in front of him, like a table.

Mass was now celebrated on a simple table of cherry-stained oak. The new altar of sacrifice was used for the first time on Oct. 7, 1964. The former decorative altar became the altar of repose. The traditional communion stations, designed by Norman Sommers and built by Gilbert Statz were similar in design to the new altar. The combination lecturn and Bible stand, used by the lay commentator during Sunday Mass, was built by Louis Statz.

The canopy was moved directly above the altar to place proper emphasis on it. In order to show that the celebrant is the president of the assembly, the president's chair, which originated in the time of Moses, was located behind the altar on an elevated platform. Christ's presence in His word and in the Blessed Sacrament was made manifest publicly through the location of the celebrants' and commentators' lecturn to the left of the altar. The Eucharistic pedestal, which takes precedence after the Eucharistic meal was located to the right of the altar.

To indicate the relationship of baptism, which admits one into the family of God and the Eucharist, which keeps one in the community of God, a new baptismal font was installed parallel to the Eucharistic pedestal.

The sacristy was moved to the rear of the church on Nov. 17 and on Nov. 19 the English missal was used for the first time.

Then, instead of the altar boy ringing a bell and the priest entering the altar from the right vesting sacristy, Mass began with a procession down the center aisle of the church.

The procession was led by the cross-bearer and two candle-bearers, and followed by a server carrying the Missal. He was followed by the priest. The procession continued down the aisle while the parishioners sang the entrance hymn. The first Sunday processional at St. Olaf's was held on Nov. 25, 1964.

The organ and choir were moved to the front of the church. In this way they were able to fulfill their role as semi-ministers of the liturgy.



FR. PATRICK DEVINE

Bishop Frederick Freking made his first official visit to St. Olaf's on May 25, 1965, to administer the sacrament of Confirmation. The class was a large one, with a total of 45 adults and 171 children being confirmed. The pews in the church were completely filled with candidates and their sponsors, leaving the balcony and aisles for parents and friends.

A Chippewa Falls - Eau Claire area native, Fr. Patrick Devine, became assistant pastor of St. Olaf's on June 25, 1965. Like his predecessors he too was active in the Christian Family Movement.

Operation Playground was completed in July 1965. During the month approximately five acres of playground was covered with six inches of topsoil and seeded. The cost of topsoil at that time in the area was \$2.00 a cubic yard and it was estimated that 5,400 yards would be needed at the cost of \$10,800. The parish obtained the black dirt for \$2,200 from Louie Phillips. Many men in the parish offered their time, talents and machinery. Louie Schmidt was given special thanks for his leadership in the project.

Blacktopping of some of the school yard was completed in August 1966.

Several years before coming to St. Olaf's Fr. Devine had volunteered for chaplaincy duty. Bishop Freking gave his consent and Fr. Devine left St. Olaf's on Aug. 31, 1966 to enter the Army.

An Oakland, California native, Fr. Robert Murray was to become the next assistant pastor of St. Olaf's. Fr. Murray took over these duties on Sept. 1, 1966. He was involved in the Christian Family Movement and renewed the parish directory, which had been originally arranged and published under the direction of Frank Seitz, a member of the parish.

St. Olaf's was a growing parish and by 1966 the church had over 500 adult members. Enrollment at the school had grown to 400 students, the teaching staff consisting of five teaching sisters and five lay teachers. To better serve the needs of the school, it was decided to form a board of education. The first election of parishioners to the board of education was held in May 1967. Elected were Bill Sumpmann, president; Brendan Murphy, vice president; Tom Dwyer, treasurer; Mrs. Tom McAuly and John Kroll, Board Members.

Non elected members serving on the board included Fr. Meinen, pastor; Sister Mary Ruth, principal; Mrs. John Hoepner, representative for the teachers; Mrs. Jane Brenner, representative of the P.T.A. and Glen Hoover, representative of the financial board.

The Finance and Advisory board of St. Olaf's met in September of 1967 and decided to draw up a charter with by-laws and elect officers. The officers were elected on Oct. 11 and installed in office. Serving were Paul Meyer, president; Ken Schneider, vice president; and Al Libby, secretary. That same day the charter and by-laws were adopted and approved.

St. Olaf's was to say good-bye to another assistant pastor in a different way. Fr. Robert Murray, was killed in a car accident on Nov. 5, 1967 near Owen, Wisconsin. Fr. Murray was 32 years old when he died and he had been ordained for only five years. Bishop Freking celebrated a Pontifical High Mass at St. Olaf's and then Fr. Murray's body was flown to Oakland, Calif. for interment.



FR. ROBERT MURRAY

Due to the growing shortage of priests in the Diocese, Bishop Freking expressed his regret that he would be unable to send an assistant pastor to St. Olaf's in the near future.

Liturgical changes were made in the 60's so that Catholics would better understand their own faith. The attitude of the church toward other faiths was also undergoing a change. The church began to stress understanding of our fellow Christians and their religions. St. Olaf's parishioners participated in an Inter-Faith Prayer Service for Christian Unity in January 1968. The Eau Claire Clergy Association sponsored the services.

Three services were held at three different churches. Grace Lutheran Church with its pastor the Rev. Johan Thorson hosted the first service on Jan. 18. St. Olaf's was the site of the second service, Jan. 21, with the Rev. Fr. Myron Meinen as host pastor. The final service was held at First Congregation Church, UCC, with the Rev. Robert Thoma, host pastor, Jan. 25.

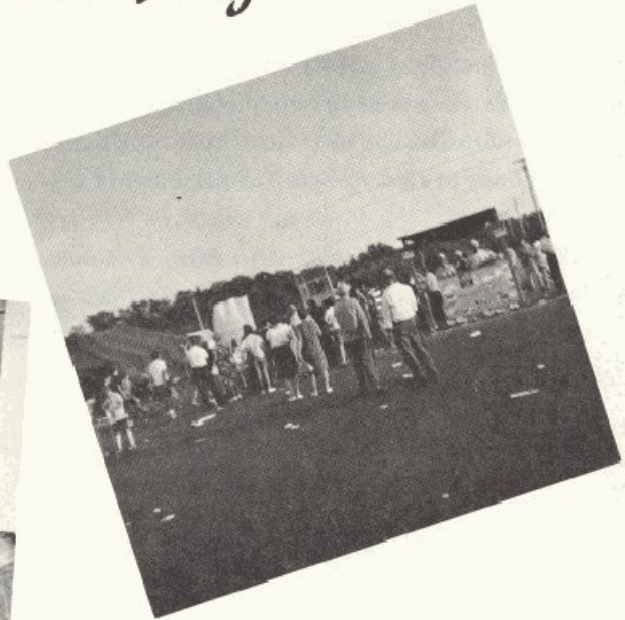
An official associate pastor had not been sent to St. Olaf's. Fr. Paul LeGare, Fr. David Gillis, Fr. Robert Cook and Fr. James Lovejoy assisted Fr. Meinen during 1968 and 69.

Spiritual growth was important at St. Olaf's, but the social side was not neglected. Parishioners gathered to play and to cheer the softball teams. They also gathered for picnics, carnivals, scouting, children's programs, bingo, boys and girls basketball and football.



ST. OLAF'S SOFTBALL TEAM WON THE CHURCH LEAGUE TITLE IN 1969. THE TEAM POSTED A 21 AND 1 RECORD. THE TEAM WENT UNBEATEN IN THE FIRST ROUND WITH AN 11 AND 0 MARK, AND TOOK THE SECOND HALF WITH A 10 AND 1 RECORD. MEMBERS OF THE CHAMPIONSHIP TEAM PICTURED HERE WERE FIRST ROW, FROM LEFT: GENE LAHR, TOM WHALEN, KEN HARINGS, BOB KRUMENAUER, PAT HARINGS, AND JAKE FELMLEE. SECOND ROW FROM LEFT ARE: DENNIS FORSTER, JERRY SCHUH, GARY SEELEY, BOB LA NOU, JOHN DOLEZEL, TOM HARINGS, AL STERLING. MISSING FROM THE PICTURE ARE NEIL HASELWANDER AND KERMIT SCOTT.

St. Olaf's at Play





The women of the parish had played an important part in its development, serving first as the Altar Society and later the Parish Council of Catholic Women. Their services were recognized on Mar. 5, 1969 in a tea for Charter members. Fr. Robert Agnew and Fr. Myron Meinen con-celebrated a mass in honor of the work of the ladies.

The women had sponsored bake sales, card parties, thrift sales, and dinners. They had donated money, food, clothing, literature, hospital gowns, bandages, altar linens and furnished altar breads. The ladies of the parish had even provided gasoline for the Sisters' car. The Council and the parish took time on this day to say "thank you."

A pastor is a man of many duties. His primary duty is to see to the spiritual needs of his parish family, whether it be greeting a new family member through baptism or saying good-bye to an old friend at a funeral mass. The pastor also has many temporal duties, such as running the school and seeing to the upkeep of the church. The parish council was formed in the spring of 1970 to help take some of the temporal work load off the pastor. It was felt that this would free the pastor to spend more time on the spiritual needs of the parish.

Bill Sumpmann was president of the first parish council. Heading up committees were Ken Schneider, administrative; Leroy Lamoureux, education; Vic Figlmiller, family life; and Bernie Kneer, parish life.

The Council was reorganized into its present form in 1971. At that time the family life committee became the family life and community committee and the liturgy committee was added.

Fr. Ronald Straub assisted Fr. Meinen in 1970 and 71.

St. Olaf's marked another first on Dec. 25, 1970 when laymen were allowed to distribute communion. Bernie Kneer and Vic Figlmiller were the first men in the parish to do this.



Although the number of families in the parish had increased, the number of children in the school had decreased. This, coupled with the increased costs of operating the school led the parish council to discuss a merger of the school with Sacred Heart parish, which was facing a similar problem.

The purpose of the consolidation was to improve the quality of Catholic elementary education in the area served by the schools. Both schools were to share teachers and facilities for more effective and efficient operation. St. Olaf's was to enroll grades one through five and Sacred Heart grades six to eight.

The two parishes undertook a three year merger study under the direction of Fr. Bernard Raschke, Eau Claire Area coordinator for Catholic Education.

The consolidation of the two schools was unanimously approved by the respective parish boards on April 6, 1972.

The independent school system was to be called St. Thomas Learning Center. The name was chosen by the students and faculty, and approved by the joint school board. The school board was made up of five members elected from each parish, the pastors of the churches and the principals of the schools.

Members of the board from St. Olaf's parish were Fr. Myron Meinen, Sister Mary Paulette, Jim Howard, Dr. John Whooley, Dave Krogman, Mrs. Jane Brenner and Bob Korte.

Assisting our pastor from 1972 until the Easter season of 1974 were Fr. Norman Boneck and Fr. Paul LeGare.

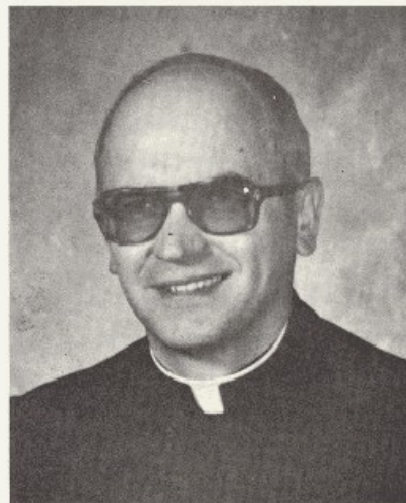


REPRESENTATIVES FROM ST. OLAF'S AND SACRED HEART MET ON APRIL 6, 1972 TO SIGN CONSOLIDATION PAPERS FOR THE TWO SCHOOLS. MEMBERS FROM ST. OLAF'S PARTICIPATING WERE SEATED RIGHT, FR. MEINEN; STANDING LEFT, JIM HOWARD, THIRD FROM LEFT JIM McMAHON.

St. Olaf's said good-bye to another pastor during Lent of 1974. Fr. Meinen left the parish to become pastor at Sacred Heart in Jim Falls.

Fr. Meinen, in his last official bulletin to the parish, quoted part of Henry Wadsworth Longfellow's poem, "Psalm of Life."

*"Lives of good men all remind us
We can make our lives sublime
And, departing, leave behind us
Footprints on the sands of time."*



Fr. Meinen had left footprints at St. Olaf's.

St. Olaf's was without an official pastor until Holy Week of that year, when Fr. William Matzek became the pastor. In the interim Fr. Paul LeGare and Fr. Gerald Schuh served the needs of the parish.

Fr. Matzek had no official assistance until the arrival of Fr. Bill Menzel in 1975.



St. Olaf's parish had not had a vocation for the faith in its 25 years of existence. However, Allen Francis Jakubowski came to the parish as an intern and decided to be ordained here. So on May 25, 1975 Allen Jakubowski became Fr. Allen Jakubowski at St. Olaf's Church. The Most Reverend Bishop William Freking extended the mission of priesthood to the son of Mr. and Mrs. Alosius Jakubowski during the liturgy of ordination.

Fr. Jakubowski celebrated his first Mass of Thanksgiving on June 1, 1975 at St. Mark the Evangelist Church, Kenosha.

ONE OF THE FIRST CHOIRS INCLUDED FROM LEFT PAT KROLL, GERRY BISCHER, JEAN LENNIE, MRS. TARBOX, IRENE ROBERGE, MARY MEINHOLZ, KATHY YOUNG, ALICE SHAW, AND BETTY SMIEJA.



An important part of the liturgy has always been the participation of the adult choir. The choir sets the mood for the service with music and acts as song leaders for the parish. New members are always welcome at the rehearsals held on Thursday evenings in the church. The directors leading the choir through the years have been:

CHOIR DIRECTORS

*Fr. Robert Hegenbarth
Fr. Bernard Raschke
Mrs. Frank Seitz
Dick Zais
Bill Erickson
Russ Champion
Mrs. Pat Kindernay
Jim Iliff*

and their service has been greatly appreciated.



THE PRESENT CHOIR AT ST. OLAF'S IS MADE UP OF FROM LEFT, TOP ROW: CURT DAHL, BUCK PAULUS, BERNIE KNEER, CLARENCE POPPE, GERRY ANDERSON AND DAN KNEER, ORGANIST. MIDDLE ROW: JIM ILIFF, DIRECTOR, MOIRA EMERSON, PAULA WESTBERG, ROSEMARY RZEPJEWSKI, KATHY KORTE AND JEANNE LENNIE. FRONT ROW: MARIE DAHL, JANET DUBEC, ALICE SHAW, BONNIE POPPE AND MARY MEINHOLZ. NOT PRESENT WHEN THE PHOTO WAS TAKEN WERE RON BOHL, GARY ANDERSON, PAT TAYLOR AND PEARL WHALEN.

The sacrament of Penance underwent a change in 1976. Although it remained what it has always been, an examination of conscience, contrition, confession of serious sin and a resolution of amendment, the rite was changed to allow a more personal contact with the priest.

St. Olaf's men, really gems, did all the work in the construction of the penance room. The room was ready for use during the first week of Lent and was well-used during the week of spiritual renewal.

The year 1977, the twenty fifth anniversary of St. Olaf's, was a year set aside to celebrate the faith and to pass it on.

Fr. Robert Agnew returned to St. Olaf's to celebrate a mass to commemorate the silver jubilee. Following the mass a dinner was held for charter members of the parish.

Spiritual Renewal week, March 13 through the 20th, was an eight day program to strengthen the spiritual vigor of the people of St. Olaf's. Fr. John Heagle and Fr. Peter Knippel presented the programs for the week. This was just another example of the efforts put forth by our pastors, past and present, to strengthen the faith of the parish.

A family picnic was held in June at Riverview Park.

Coming events will be an Ecumenical Service in August and the annual parish picnic, Sept. 11 with the theme celebrate our faith and pass it on.

A dinner dance will be sponsored by the men's group on Oct. 22 and there will be a confirmation and parish celebration with Bishop Frederick Freking in November. Renewal of Spirit and Thanksgiving will be its theme.



ATTENDING THE CHARTER MEMBER DINNER WHICH BEGAN THE SILVER JUBILEE CELEBRATION WERE FR. MATZEK, FR. AGNEW, FR. MEINEN, FR. MENZEL, AND FR. JAKUBOWSKI



YOUTH NIGHT

Conducting a prayer service after the homily for the Youth Night service of the Parish Renewal were from left: Vic Figlmüller, Fr. John Heagle and John Barnum.

Fr. John Heagle served as the spiritual leader for the first four days of the Parish Renewal services.

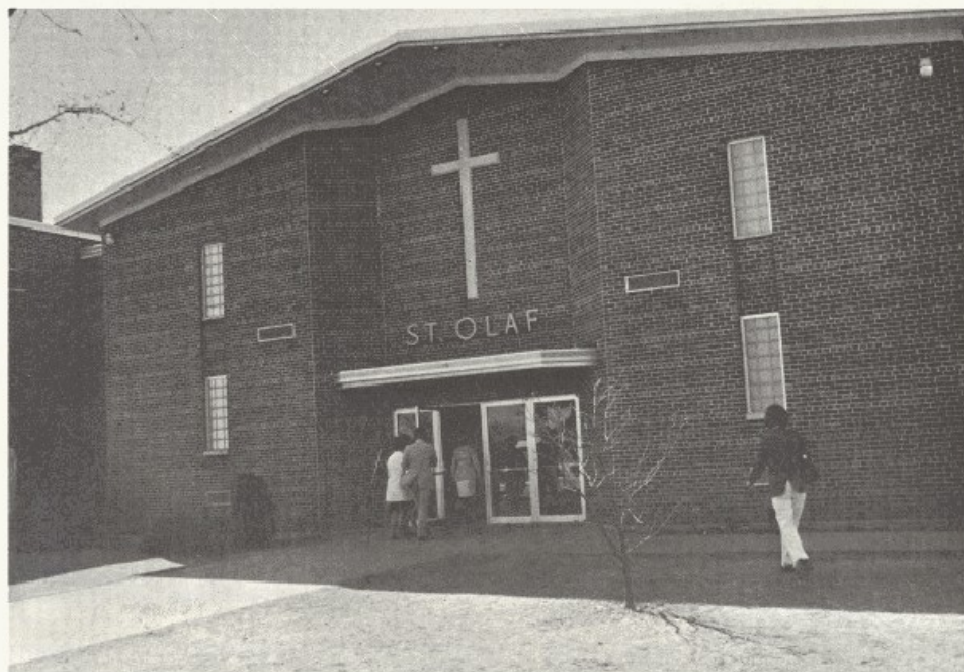


Fr. Peter Knippel incensing the Pascal Candle during a parish renewal service.

Activities of the ladies of the parish, individually and as members of the Altar Society—PGCW have been most valuable in the development of St. Olaf's. By the same token, the men of the parish have always come through when maintenance problems, repairs, and upkeep called for special attention. Their fish fries and picnic assistance have also been greatly appreciated.

St. Olaf's parish family has now grown to over 2,000. Many people have passed through the church doors. They have given of their time and their talents to build not just a church, but a parish family. They came in times of happiness and in times of sadness. Some came seeking a friend and found many.

When Fr. Meinen left he stated that he had left his footprints in the parish community. In one way or another, everyone who has passed through the church doors has left his footprints in the parish. It's just that some footprints are a little larger than others.



PARISH COUNCIL OF CATHOLIC WOMEN PRESIDENTS

<i>Mrs. Victor Figlmiller</i>	1952-53
<i>Mrs. Alvin Cramblit</i>	1954-55
<i>Mrs. Henry Schultz</i>	1956-57
<i>Mrs. Ralph Drake</i>	1958-59
<i>Mrs. Henry Van Helden</i>	1960-61
<i>Mrs. Wayne Kronenberg</i>	1964
<i>Mrs. Robert Lisenbee</i>	1965
<i>Mrs. John Kroll</i>	1966
<i>Mrs. James Howard</i>	1967
<i>Mrs. Joseph Schulner</i>	1962-63-68
<i>Mrs. Donald Westberg</i>	1969
<i>Mrs. James Berger</i>	1970
<i>Mrs. Clarence VanderWegen</i>	1971
<i>Mrs. Herbert Harings</i>	1972
<i>Mrs. Robert Korte</i>	1973
<i>Mrs. Gary Eide</i>	1974
<i>Mrs. Peter Dejno</i>	1975-76



CHARTER FAMILIES OF ST. OLAF'S PARISH

<i>Agnew, Mrs. John</i>	<i>Butterfield, Ted</i>	<i>Figlmiller, Victor Sr.</i>
<i>Allard, Walter</i>	<i>Candell, James</i>	<i>Fleury, G. Wm.</i>
<i>Anderson, Jaclyn</i>	<i>Carlson, Andrew</i>	<i>Foster, W. A.</i>
<i>Anderson, Mrs. Ray</i>	<i>Carroll, Thomas</i>	<i>Foster, Willis A.</i>
<i>Anklam, Lawrence</i>	<i>Chambers, Hugh</i>	<i>Fuller, Mrs. Mary</i>
<i>Aubert, Henry</i>	<i>Christenson, Mrs. Harold</i>	<i>Gallagher, Clyde</i>
<i>Aubert, Mrs. John</i>	<i>Close, Frank</i>	<i>Gibson, Richard</i>
<i>Bailer, C. C.</i>	<i>Comerford, Donald</i>	<i>Gilbert, Glenn</i>
<i>Balke, Melvin</i>	<i>Conant, William</i>	<i>Gilbert, Howard</i>
<i>Barnum, John</i>	<i>Cramblit, Alvin</i>	<i>Gilfoy, Patricia</i>
<i>Bauer, George A.</i>	<i>Curry, Arthur J.</i>	<i>Gilmaster, Ray</i>
<i>Barrickman, Lloyd</i>	<i>Dahl, Mrs. Glenn</i>	<i>Ginder, Fred Sr.</i>
<i>Beaudot, Milton</i>	<i>Dalbee, Marvin</i>	<i>Golden, John</i>
<i>Beaulieu, Louis</i>	<i>Dekan, Wilmer</i>	<i>Grass, John</i>
<i>Beaver, Gilbert</i>	<i>De Mars, Dayton</i>	<i>Grill, John Jr.</i>
<i>Beaver, Joseph</i>	<i>Diedrich, Duane</i>	<i>Grill, Walter</i>
<i>Bell, Daniel</i>	<i>Diedrich, Norbert</i>	<i>Guite, Ray</i>
<i>Bett, William</i>	<i>D'Lamatter, Mrs. Virgil</i>	<i>Gund, Charles</i>
<i>Bien, Chester</i>	<i>Douglas, Purlie</i>	<i>Haas, Edward</i>
<i>Bischel, James</i>	<i>Dubberke, Mrs. Lawrence</i>	<i>Hahn, Frank</i>
<i>Bisek, Peter</i>	<i>Duerkop, Mrs. Cletus</i>	<i>Hanson, Janice</i>
<i>Blaha, Frank</i>	<i>Eldridge, G. W.</i>	<i>Harings, Gilbert</i>
<i>Boettcher, Mrs. Vernon</i>	<i>Eldridge, Gerald</i>	<i>Harings, Herbert</i>
<i>Bogstad, Joseph</i>	<i>Emerick, Clifford</i>	<i>Harings, Matt</i>
<i>Bohl, Leonard</i>	<i>Epp, Rudolph</i>	<i>Harrington, Francis</i>
<i>Bowe, Eugene</i>	<i>Eslinger, Imbert</i>	<i>Hassing, Paul</i>
<i>Bowe, Ralph</i>	<i>Falch, Anton</i>	<i>Haugen, Loren</i>
<i>Buckwheat, Percy</i>	<i>Fering, Mrs. R. Wesley</i>	<i>Hauptman, August</i>
<i>Burger, Mrs. Marshall</i>	<i>Figlmiller, Victor Jr.</i>	<i>Hauptmann, Mrs. Frances</i>

Hauptmann, Gertrude
 Hauptmann, Joseph
 Hauptmann, Mary
 Hauser, Philip
 Heller, Joseph
 Hepfler, Mrs. John
 Hillman, Mrs. David
 Hoepner, John
 Hoffman, Larry
 Hotchkiss, Mrs. Ray
 Husome, Mrs. C. J.
 Jasper, John L.
 Johnson, Geo. F.
 Karker, Walter
 Kawell, Geo. H.
 Kearney, John
 King, Corliss
 King, Gilbert
 Kneer, Bernard
 Knowlton, Walter
 Knudtson, Oscar
 Kobinski, John
 Korgner, W. A.
 Krogman, Keith
 Krogman, Richard
 Kroll, John D.
 Kronenberg, Harold
 Kruger, Mrs. Mary
 Kurtz, Mrs. Wm.
 Kurth, Nyle
 LaBerge, Ray
 Lassek, Frank
 LaVelle, Mrs. James
 Lawrence, Michael
 LeBarron, Mrs. Anna
 LeBarron, Stewart
 Lennie, Bernard
 Lightfoot, Andrew
 Lightfoot, James
 Lloyd, Harry
 Lund, Mrs. Arthur
 Madson, Mrs. Edna
 Martenson, Albert
 Martin, Elza
 Mason, Ralph
 Mauhar, Wm.
 McCrackin, Donald
 McDonald, Ray
 McFaul, Glenn
 McFaul, Herbert
 McFaul, Mrs. Marie
 McFaul, Marshall
 McInnis, John A.
 McInnis, Ronald
 McMahon, Arthur
 McNeal, Michael

McRae, Harold
 McSorley, Bernard
 Meinholz, Matt
 Meyer, Dennis F.
 Meyer, Earl
 Meyer, Mrs. George
 Michelbook, John
 Michels, Charles
 Moe, Adolph
 Moore, Mrs. Mary
 Mousel, Clarence
 Mulhollam, Hugh
 Murphy, Brendan
 Nelson, Mrs. T.
 Nelson, Walter
 Nichols, Russell
 Nicolai, Bernard
 Nicolai, Carl E.
 Nowak, Francis
 Olinger, John
 Olson, Mrs. David
 Olson, Ernest
 Olson, Mrs. Kenneth
 Olson, Lester
 Omodth, Mrs. Clyde
 Paape, LaMoyné
 Paulson, Mrs. Ralph
 Pederson, Mrs. Chris
 Pehoske, Blacy
 Pehoske, Shirley
 Peltier, Harry
 Radisewitz, Lawrence
 Rahr, S. W.
 Ralston, Vernon
 Rasler, Mrs. Aegir
 Rathke, Mrs. Anna
 Reiter, Cecil F.
 Reynen, Lester
 Rheingans, Glenn
 Ruhe, Frank N.
 Ruhe, George
 Russell, Donald
 Salter, Mrs. Richard
 Schara, Albert F.
 Schmidt, Louis
 Schmit, Eugene C.
 Schmit, James
 Schmit, Wm.
 Schoettl, David
 Schoettl, John
 Schulner, Darlene
 Schulner, Francis
 Schulner, Joseph E.
 Schulner, Willard
 Schulte, James A.
 Schultz, Henry

Schwartz, Mrs. Merton
 Scott, Wilbur J.
 Severson, Earl H.
 Sexter, Floyd
 Sexter, Mrs. Marian
 Seyberth, Mrs. Art
 Shaw, Dennis
 Shaw, George
 Shemick, Mrs. Reuben
 Skoug, Lester
 Smieja, Ed.
 Smith, James A. R.
 Smuhl, Chester
 Sobol, Albert
 Springer, Mrs. Geo.
 Statz, Gilbert
 Statz, Louis F.
 Steinberg, Jerold
 Steinmetz, Elmer
 Steinmetz, Wyman F.
 Stygar, Alex
 Theisen, Floyd
 Thompson, Mrs. Adolph
 Thompson, Charles E.
 Traynor, John W.
 VanderWegen, Clarence
 VanDyke, Mrs. Hubert
 Van Helden, Henry
 VerHagen, Mrs. John
 Vinton, Edward F.
 Wahl, John W.
 Wahl, Wm. J.
 Walker, Mrs. Eugene
 Walker, Lawrence
 Walter, Mrs. Ed
 Warden, Mrs. Harry B.
 Watson, Clinton
 Webb, Mrs. C. G.
 Weber, Alfred
 Weisheipl, Wm.
 Welch, Mrs. James
 Wells, Charles E.
 Wendt, Walter
 White, Donald
 White, Mrs. James
 White, Joan C.
 White, W. F.
 Wilson, Glenn
 Wilson, Mrs. Vivian
 Woodford, Leon
 Wright, Mrs. J. Leon
 Wurzer, Ernest
 Zais, Jacob
 Zell, Edward